

UP

COLLECTION

STREETSCAPE

SINGLE STOREY



UP

COLLECTION

Every home within the JG King Up Collection is built with innovative steel framing, so they're not just stylish but will also stay safe and sturdy for decades to come. And here's the cherry on top - your dream home also comes equipped with a Colorbond® steel roof. Whether you're after something contemporary or more traditional, it can be yours.





KINGSTON



MIDAS



OXFORD



SAHARA



STARLET







CARNIVAL

Take a step in and you'll be greeted by an impressive foyer in Carnival. Venture further in to find four bedrooms, a meals area that opens to the outdoors, as well as the option to choose between one or two living rooms. A study can also be included if you so desire. The master bedroom sits privately at the front of the home and features an ensuite and large walk-in robe, while the remaining three bedrooms are expertly positioned to share a well-appointed bathroom.



Victoria's largest builder of steel frame homes.

Superior to timber for its termite and fire resistance, steel frame technology is quickly becoming the number one choice for home builders in Australia. At JG King, we have a proven track record in building steel frame homes since 1985.

-  **TERMITE RESISTANT**
-  **BUSHFIRE PROTECTION**
-  **50 YEAR STRUCTURAL WARRANTY**
-  **MULTI AWARD WINNING BUILDER**
-  **OVER 20,000 HOMES BUILT**
-  **MELBOURNE & REGIONAL VICTORIA**

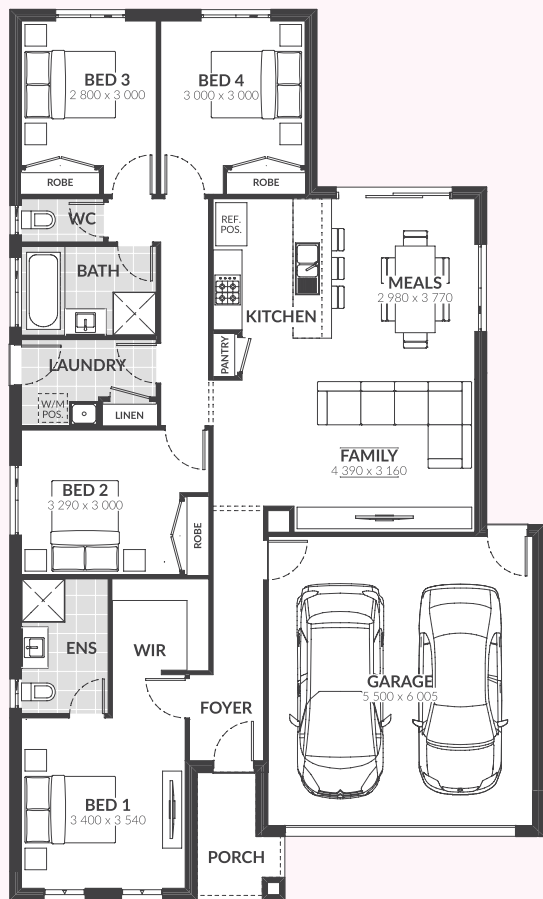


jgking.com.au
1300 JG KING

Up Collection 2019 homes are available in a range of sizes, which are indicative only. The required block frontage and width is subject to the fall and orientation of your land and developer and council guidelines. Floorplans in this brochure are based on the standard façade option. Whilst every endeavour has been made to ensure the accuracy of the information provided, all images are for illustration purposes only and may depict fixtures, finishes and features either not supplied or above standard design specification. These items may include decorative light fittings, wall finishes, furniture, window furnishings, fireplaces, cladding, in built joinery, facades and landscaping such as planter boxes, retaining walls, water features, fencing and barbecues. Geographical restrictions and travel surcharges may apply depending on building location. BAL 12.5 and 6 star energy rating based on standard plans only. For detailed home pricing and standard design inclusions regarding homes and your build location, please contact a JG King Homes representative. Information in this brochure is correct at the time of printing. This information is to be used as a guide only and JG King makes no warranties about the accuracy or completeness of the information. JG King Homes reserves the right to alter or withdraw floorplans and facades at any time without notice. Copyright ©2019 Reproduction in any form either in whole or part is forbidden. JG King Pty Ltd (T/A J G King Homes) ABN 21 006 627 210 Registered Building Practitioner Licence CDB-U 49366. V01 22.07.19

CARNIVAL 172

4 2 1 2



HOUSE	131.93m ²	14.20sq
PORCH	4.06m ²	0.44sq
GARAGE	36.37m ²	3.91sq
TOTAL AREA	172.36m ²	18.55sq

EXTERIOR WIDTH	11.10m
EXTERIOR LENGTH	20.00m
BLOCK WIDTH	12.50m
BLOCK DEPTH	28.00m

CARNIVAL 207

4 2 2 1 2



HOUSE	166.58m ²	17.93sq
PORCH	4.06m ²	0.44sq
GARAGE	36.37m ²	3.91sq
TOTAL AREA	207.01m ²	22.28sq

EXTERIOR WIDTH	11.10m
EXTERIOR LENGTH	22.00m
BLOCK WIDTH	12.50m
BLOCK DEPTH	30.00m

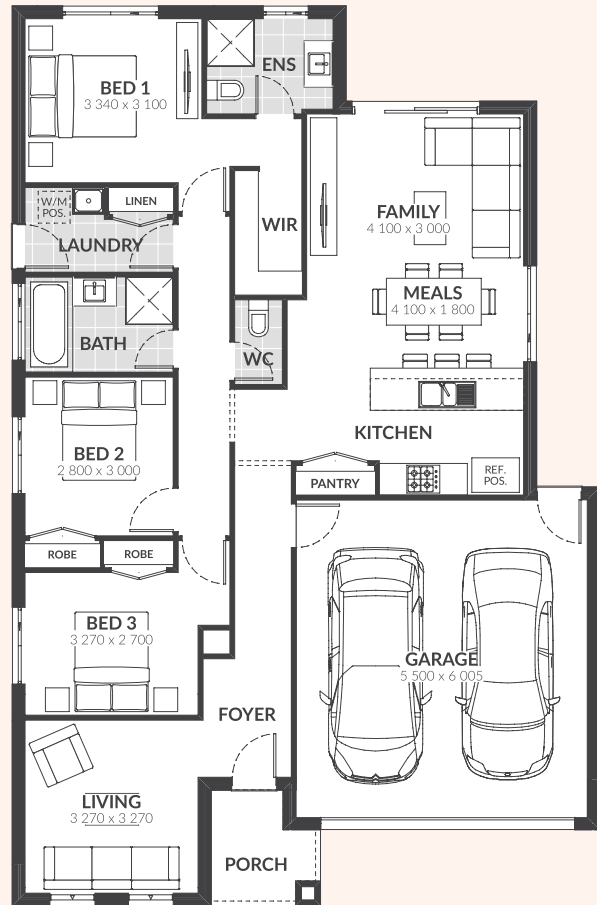
CORAL

Coral's floorplan designs are ideal for modern, close-knit families. The formal living at the front of the home is perfect for hosting dinner parties, and the open-plan kitchen faces the meals and family room – making it perfect for inclusive entertaining. Large windows and sliding doors bathe the interiors with natural light - a treat for those who love long summer days. For complete privacy, the master bedroom is located at the back of the home and comes with a large ensuite and walk-in robe.



CORAL 164

3 2 2 2

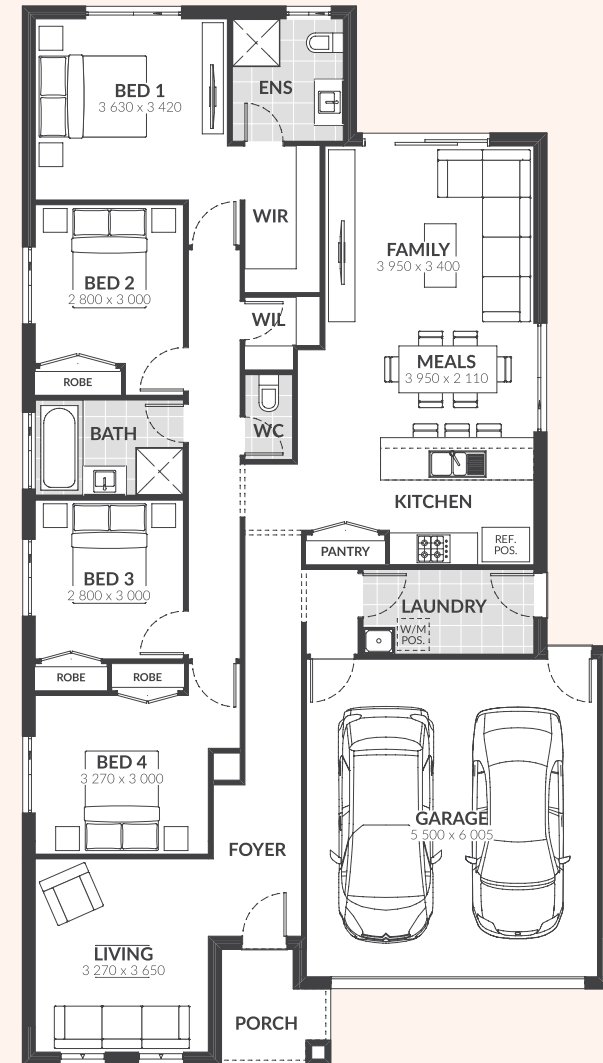


HOUSE	123.47m ²	13.29sq
PORCH	4.01m ²	0.43sq
GARAGE	36.23m ²	3.90sq
TOTAL AREA	163.71m ²	17.62sq

EXTERIOR WIDTH	11.10m
EXTERIOR LENGTH	17.00m
BLOCK WIDTH	12.50m
BLOCK DEPTH	25.00m

CORAL 191

4 2 2 2

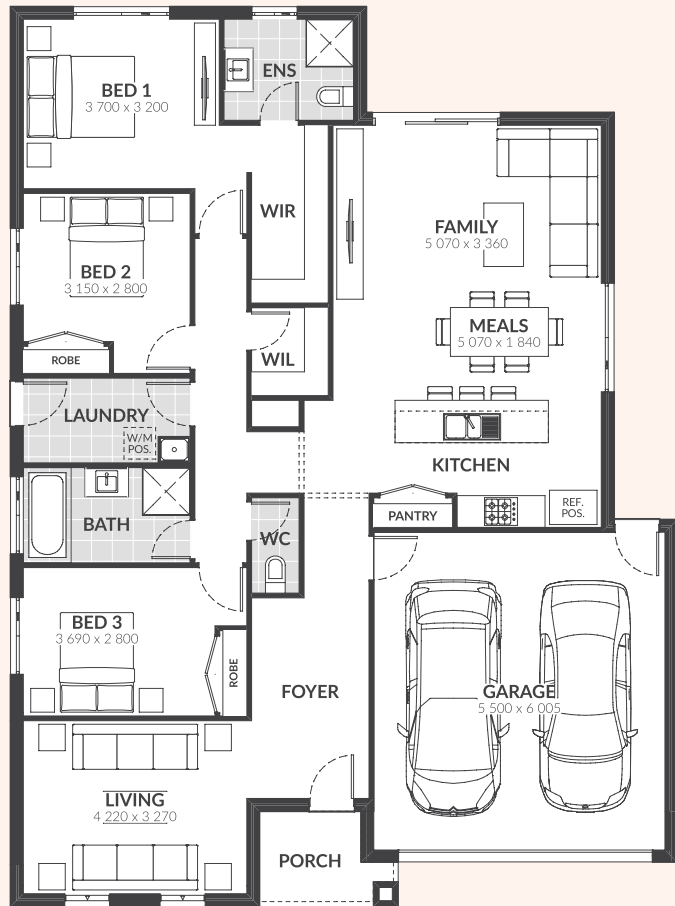


HOUSE	151.01m ²	16.26sq
PORCH	4.02m ²	0.43sq
GARAGE	36.23m ²	3.90sq
TOTAL AREA	191.26m ²	20.59sq

EXTERIOR WIDTH	11.10m
EXTERIOR LENGTH	20.00m
BLOCK WIDTH	12.50m
BLOCK DEPTH	28.00m

CORAL 189

3 2 2 2

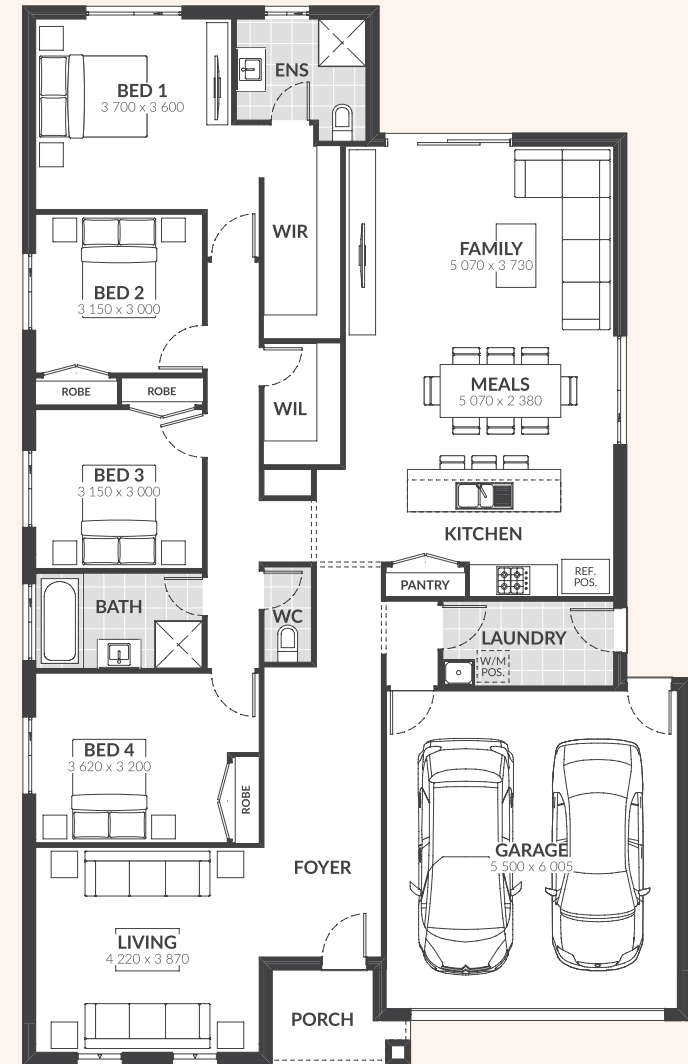


HOUSE	148.45m ²	15.98sq
PORCH	4.04m ²	0.43sq
GARAGE	36.28m ²	3.91sq
TOTAL AREA	188.77m ²	20.32sq

EXTERIOR WIDTH	12.60m
EXTERIOR LENGTH	17.00m
BLOCK WIDTH	14.00m
BLOCK DEPTH	25.00m

CORAL 221

4 2 2 2



HOUSE	180.78m ²	19.46sq
PORCH	4.04m ²	0.43sq
GARAGE	36.28m ²	3.91sq
TOTAL AREA	221.10m ²	23.80sq

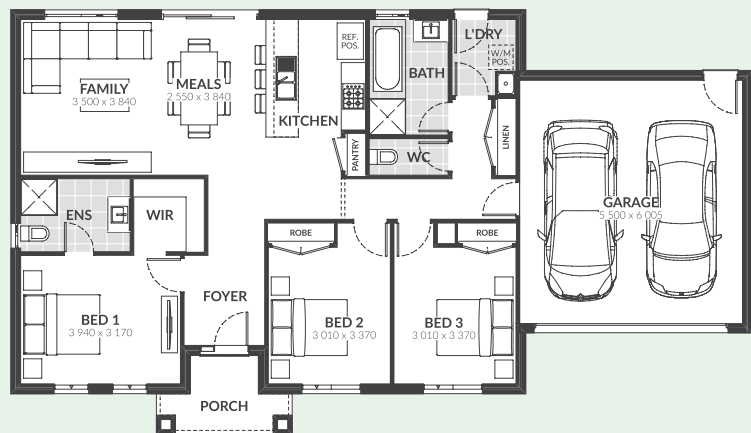
EXTERIOR WIDTH	12.60m
EXTERIOR LENGTH	20.00m
BLOCK WIDTH	14.00m
BLOCK DEPTH	28.00m

FOREST

Calling all nature lovers! You'll be bowled over by Forest's impeccable balance between open space and extreme comfort. This floorplan was especially created for wider blocks of land and is perfect for families who love hosting parties and children's activities in their home. Your breath will be taken away by the extravagant foyer and with so much space at your fingertips, there's also the option to include a second living room. Bask in the complete privacy of the master bedroom with its large ensuite and walk-in robe, situated away from the remaining bedrooms and family areas.



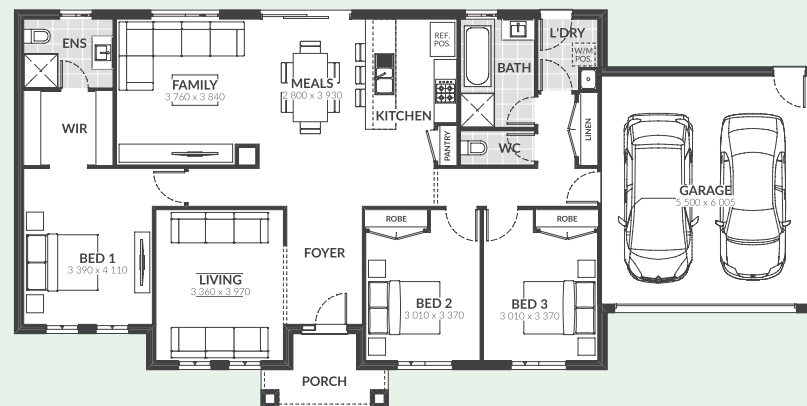
FOREST 160



HOUSE	117.69m ²	12.67sq
PORCH	4.96m ²	0.53sq
GARAGE	37.14m ²	4.00sq
TOTAL AREA	159.79m ²	17.20sq

EXTERIOR WIDTH	18.29m
EXTERIOR LENGTH	9.47m
BLOCK WIDTH	20.00m
BLOCK DEPTH	20.00m

FOREST 184

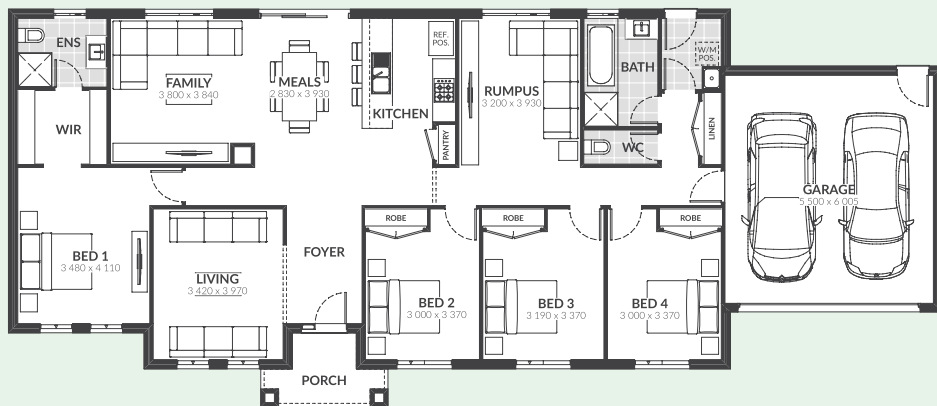


HOUSE	141.85m ²	15.27sq
PORCH	4.96m ²	0.53sq
GARAGE	37.14m ²	4.00sq
TOTAL AREA	183.95m ²	19.80sq

EXTERIOR WIDTH	21.19m
EXTERIOR LENGTH	9.47m
BLOCK WIDTH	23.00m
BLOCK DEPTH	20.00m

FOREST 216

4 2 3 2



HOUSE	174.06m ²	18.74sq
PORCH	4.96m ²	0.53sq
GARAGE	37.14m ²	4.00sq
TOTAL AREA	216.16m ²	23.27sq

EXTERIOR WIDTH	24.60m
EXTERIOR LENGTH	9.47m

BLOCK WIDTH	26.00m
BLOCK DEPTH	20.00m



HONEY

You are in for a sweet home treat. Honey ticks the boxes of smart and storage, with considered spaces maximised via linen closets, storage and study nooks where possible. Bedrooms are incredibly spacious and cleverly positioned on one side of the home, away from the common family areas. The list does go on: there's easy access to the garage through the laundry or kitchen, making unloading shopping or sports gear a breeze. Plus, an expansive kitchen, meals and family area makes moments at home much more relaxing, comfortable and enjoyable.



HONEY 178

4 2 1 2

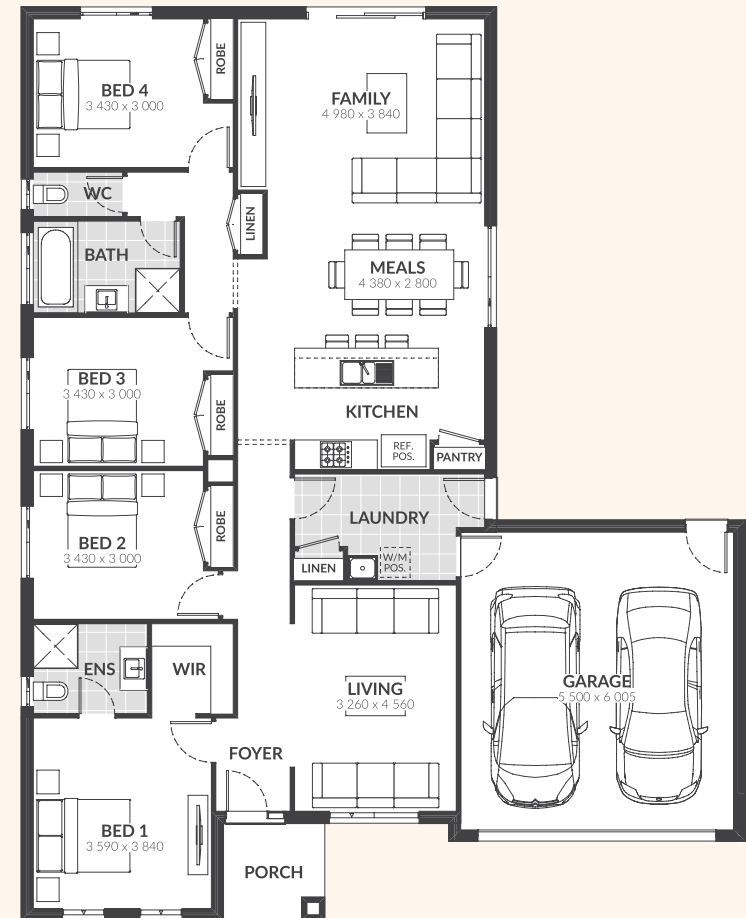


HOUSE	136.82m ²	14.73sq
PORCH	4.00m ²	0.43sq
GARAGE	36.84m ²	3.97sq
TOTAL AREA	177.66m ²	19.12sq

EXTERIOR WIDTH	14.60m
EXTERIOR LENGTH	15.25m
BLOCK WIDTH	16.00m
BLOCK DEPTH	25.00m

HONEY 203

4 2 2 2

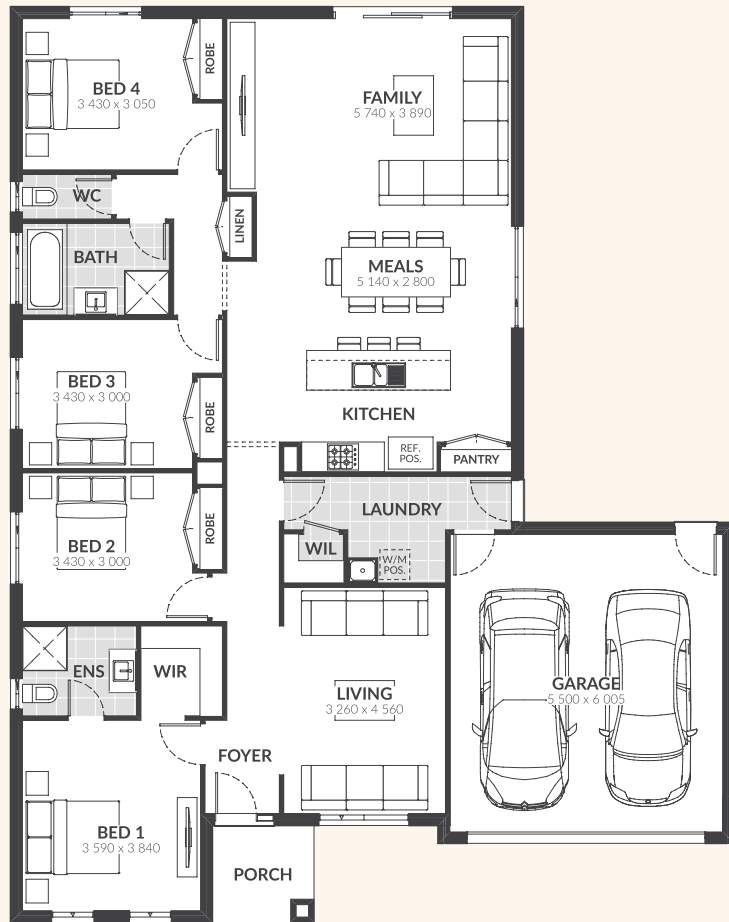


HOUSE	161.44m ²	17.38sq
PORCH	4.02m ²	0.43sq
GARAGE	37.05m ²	3.99sq
TOTAL AREA	202.51m ²	21.80sq

EXTERIOR WIDTH	14.60m
EXTERIOR LENGTH	18.42m
BLOCK WIDTH	16.00m
BLOCK DEPTH	28.00m

HONEY 211

4 2 2 2



HOUSE	170.00m ²	18.30sq
PORCH	4.02m ²	0.43sq
GARAGE	36.87m ²	3.97sq
TOTAL AREA	210.89m ²	22.70sq

EXTERIOR WIDTH	14.60m
EXTERIOR LENGTH	18.47m
BLOCK WIDTH	16.00m
BLOCK DEPTH	28.00m

HONEY 245

5 2 2 1 2



HOUSE	202.47m ²	21.79sq
PORCH	5.00m ²	0.54sq
GARAGE	37.19m ²	4.00sq
TOTAL AREA	244.66m ²	26.34sq

EXTERIOR WIDTH	16.20m
EXTERIOR LENGTH	21.35m
BLOCK WIDTH	18.00m
BLOCK DEPTH	30.00m







LAGOON

If you want a home that offers privacy at every corner, you'll love Lagoon designs. Bedrooms are tucked away from the hustle and bustle of the main living areas for quiet retreat. The open plan kitchen, meals and family area is readily accessible from the garage with a laundry close by so you can manage the cooking, washing and entertaining at the same time. For even more space and comfort, there's the design option to integrate a second living room.



Victoria's largest builder of steel frame homes.

Superior to timber for its termite and fire resistance, steel frame technology is quickly becoming the number one choice for home builders in Australia. At JG King, we have a proven track record in building steel frame homes since 1985.

-  **TERMITE RESISTANT**
-  **BUSHFIRE PROTECTION**
-  **50 YEAR STRUCTURAL WARRANTY**
-  **MULTI AWARD WINNING BUILDER**
-  **OVER 20,000 HOMES BUILT**
-  **MELBOURNE & REGIONAL VICTORIA**



jgking.com.au
1300 JG KING

Up Collection 2019 homes are available in a range of sizes, which are indicative only. The required block frontage and width is subject to the fall and orientation of your land and developer and council guidelines. Floorplans in this brochure are based on the standard façade option. Whilst every endeavour has been made to ensure the accuracy of the information provided, all images are for illustration purposes only and may depict fixtures, finishes and features either not supplied or above standard design specification. These items may include decorative light fittings, wall finishes, furniture, window furnishings, fireplaces, cladding, in built joinery, facades and landscaping such as planter boxes, retaining walls, water features, fencing and barbecues. Geographical restrictions and travel surcharges may apply depending on building location. BAL 12.5 and 6 star energy rating based on standard plans only. For detailed home pricing and standard design inclusions regarding homes and your build location, please contact a JG King Homes representative. Information in this brochure is correct at the time of printing. This information is to be used as a guide only and JG King makes no warranties about the accuracy or completeness of the information. JG King Homes reserves the right to alter or withdraw floorplans and facades at any time without notice. Copyright ©2019 Reproduction in any form either in whole or part is forbidden. JG King Pty Ltd (T/A J G King Homes) ABN 21 006 627 210 Registered Building Practitioner Licence CDB-U 49366. V01 22.07.19

LAGOON 167



HOUSE	126.35m ²	13.60sq
PORCH	4.00m ²	0.43sq
GARAGE	36.52m ²	3.93sq
TOTAL AREA	166.87m ²	17.96sq

EXTERIOR WIDTH	14.60m
EXTERIOR LENGTH	13.81m
BLOCK WIDTH	16.00m
BLOCK DEPTH	25.00m

LAGOON 186



HOUSE	145.70m ²	15.68sq
PORCH	4.00m ²	0.43sq
GARAGE	36.13m ²	3.89sq
TOTAL AREA	185.83m ²	20.00sq

EXTERIOR WIDTH	14.60m
EXTERIOR LENGTH	14.62m
BLOCK WIDTH	16.00m
BLOCK DEPTH	25.00m

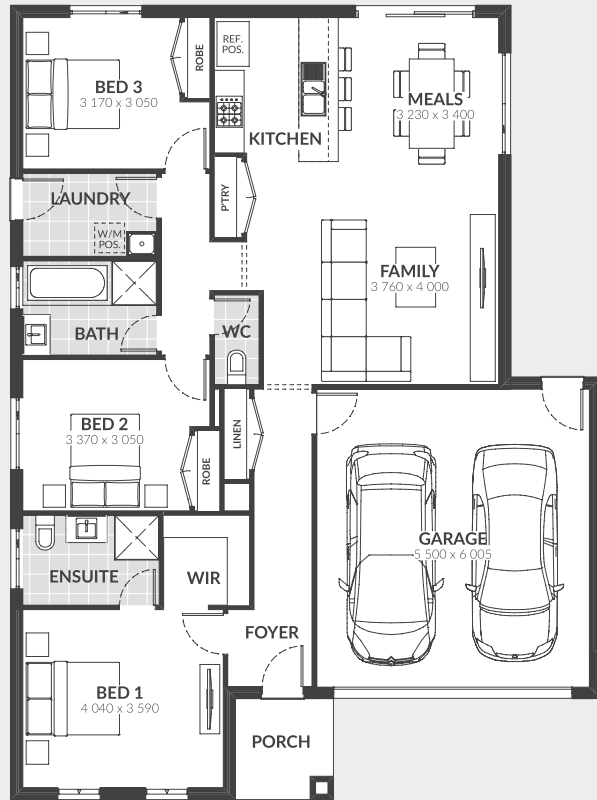
MIDNIGHT

Aptly named, the open plan format will have you and your guests chatting away till the hours pass you by. Choose between a three bedroom or four bedroom plus second living room design. The spacious master bedroom positioned at the front of the home includes an ensuite bathed in natural light and sizeable walk-in robe. To top it all off, linen closets throughout the home and easy access to the laundry from all bedrooms, will make keeping things neat and tidy a breeze.



MIDNIGHT 166

3 2 1 2

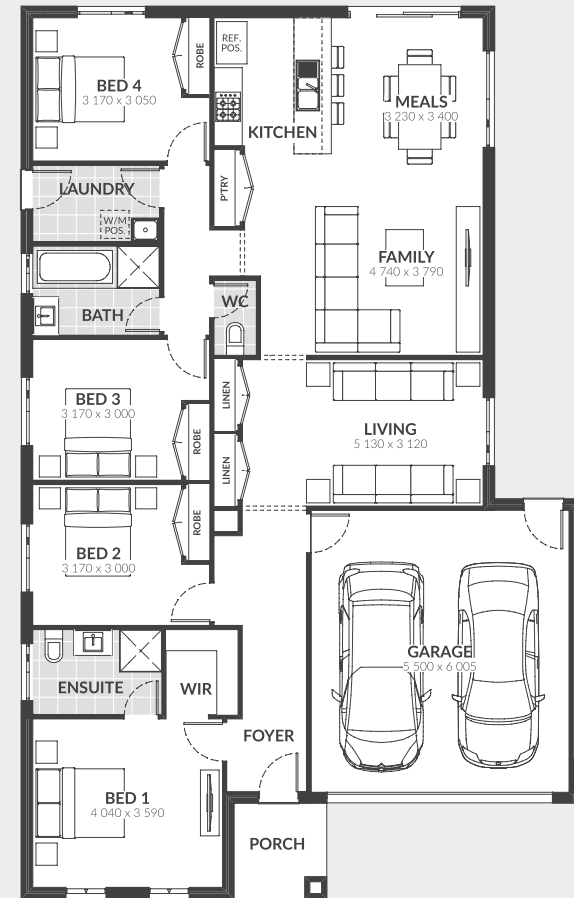


HOUSE	125.44m ²	13.50sq
PORCH	4.04m ²	0.43sq
GARAGE	36.20m ²	3.90sq
TOTAL AREA	165.68m ²	17.83sq

EXTERIOR WIDTH	11.90m
EXTERIOR LENGTH	16.00m
BLOCK WIDTH	14.00m
BLOCK DEPTH	25.00m

MIDNIGHT 196

4 2 2 2

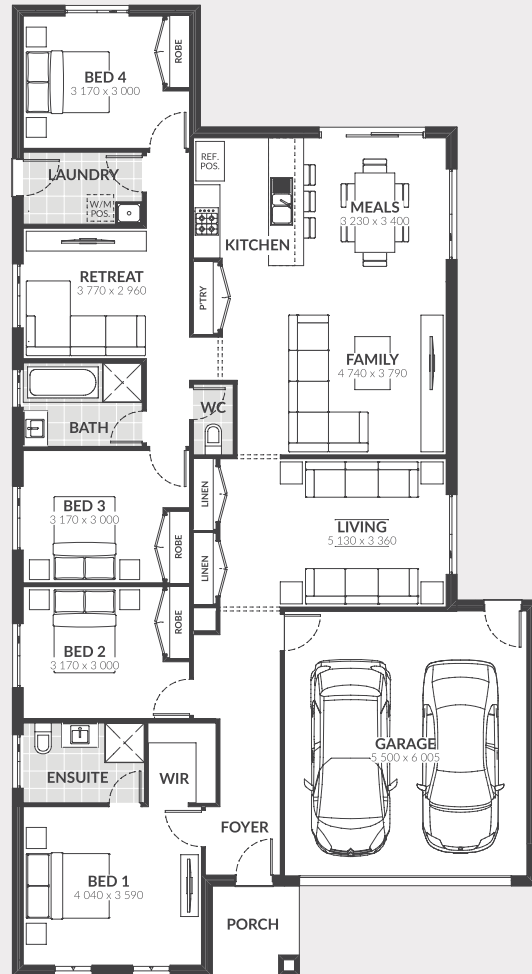


HOUSE	155.65m ²	16.75sq
PORCH	4.04m ²	0.43sq
GARAGE	36.20m ²	3.90sq
TOTAL AREA	195.89m ²	21.09sq

EXTERIOR WIDTH	11.90m
EXTERIOR LENGTH	19.00m
BLOCK WIDTH	14.00m
BLOCK DEPTH	28.00m

MIDNIGHT 210

4 2 3 2

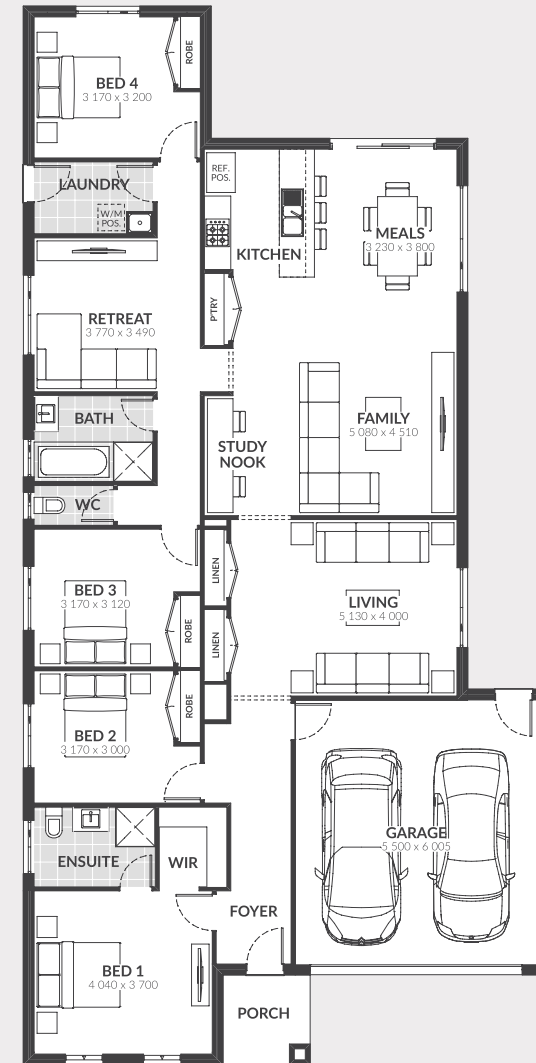


HOUSE	169.80m ²	18.28sq
PORCH	4.04m ²	0.43sq
GARAGE	36.20m ²	3.90sq
TOTAL AREA	210.04m ²	22.61sq

EXTERIOR WIDTH	11.90m
EXTERIOR LENGTH	22.00m
BLOCK WIDTH	14.00m
BLOCK DEPTH	30.00m

MIDNIGHT 229

4 2 3 2



HOUSE	188.54m ²	20.29sq
PORCH	4.04m ²	0.43sq
GARAGE	36.20m ²	3.90sq
TOTAL AREA	228.78m ²	24.63sq

EXTERIOR WIDTH	11.90m
EXTERIOR LENGTH	24.00m
BLOCK WIDTH	14.00m
BLOCK DEPTH	32.00m

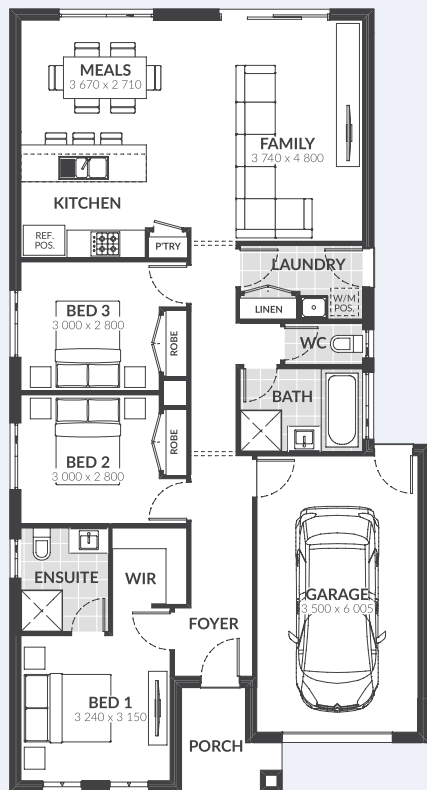
OCEAN

Cleverly designed to suit narrow blocks of land, Ocean maximises as much space as possible. Ocean's living space is in the rear of the home and conveniently opens to the outdoors. Enjoy a second sun-filled living space with large windows and master bedroom with ensuite and walk-in robe.



OCEAN 140

3 2 1 1

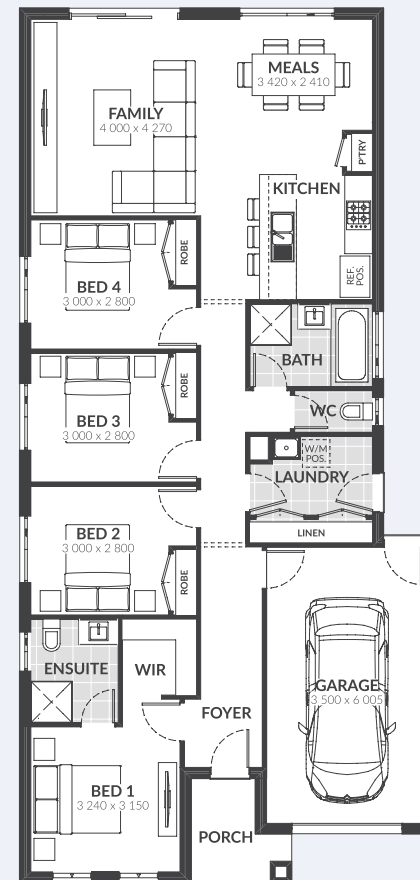


HOUSE	112.04m ²	12.06sq
PORCH	4.02m ²	0.43sq
GARAGE	23.88m ²	2.57sq
TOTAL AREA	139.94m ²	15.06sq

EXTERIOR WIDTH	9.10m
EXTERIOR LENGTH	17.00m
BLOCK WIDTH	10.50m
BLOCK DEPTH	25.00m

OCEAN 156

4 2 1 1



HOUSE	127.84m ²	13.76sq
PORCH	4.02m ²	0.43sq
GARAGE	23.88m ²	2.57sq
TOTAL AREA	155.74m ²	16.76sq

EXTERIOR WIDTH	9.10m
EXTERIOR LENGTH	19.00m
BLOCK WIDTH	10.50m
BLOCK DEPTH	28.00m



HOUSE	159.44m ²	17.16sq
PORCH	4.02m ²	0.43sq
GARAGE	23.88m ²	2.57sq
TOTAL AREA	187.34m ²	20.17q

EXTERIOR WIDTH	9.10m
EXTERIOR LENGTH	23.00m

BLOCK WIDTH	10.50m
BLOCK DEPTH	32.00m







PARADISE

Time to set foot on your own personal Paradise. Convenience, decadence, comfort... You're getting it all with Paradise. The well-appointed kitchen with a stylish breakfast bench overlooks the meals and family room and opens to the outdoors so you can entertain indoors and outdoors. Enjoy a luxuriously laid out master bedroom with a sweeping walk-in robe and ensuite. You'll never run out of storage space (what a dream!) with linen closets and robes fitted in every bedroom.



Victoria's largest builder of steel frame homes.

Superior to timber for its termite and fire resistance, steel frame technology is quickly becoming the number one choice for home builders in Australia. At JG King, we have a proven track record in building steel frame homes since 1985.

-  **TERMITE RESISTANT**
-  **BUSHFIRE PROTECTION**
-  **50 YEAR STRUCTURAL WARRANTY**
-  **MULTI AWARD WINNING BUILDER**
-  **OVER 20,000 HOMES BUILT**
-  **MELBOURNE & REGIONAL VICTORIA**

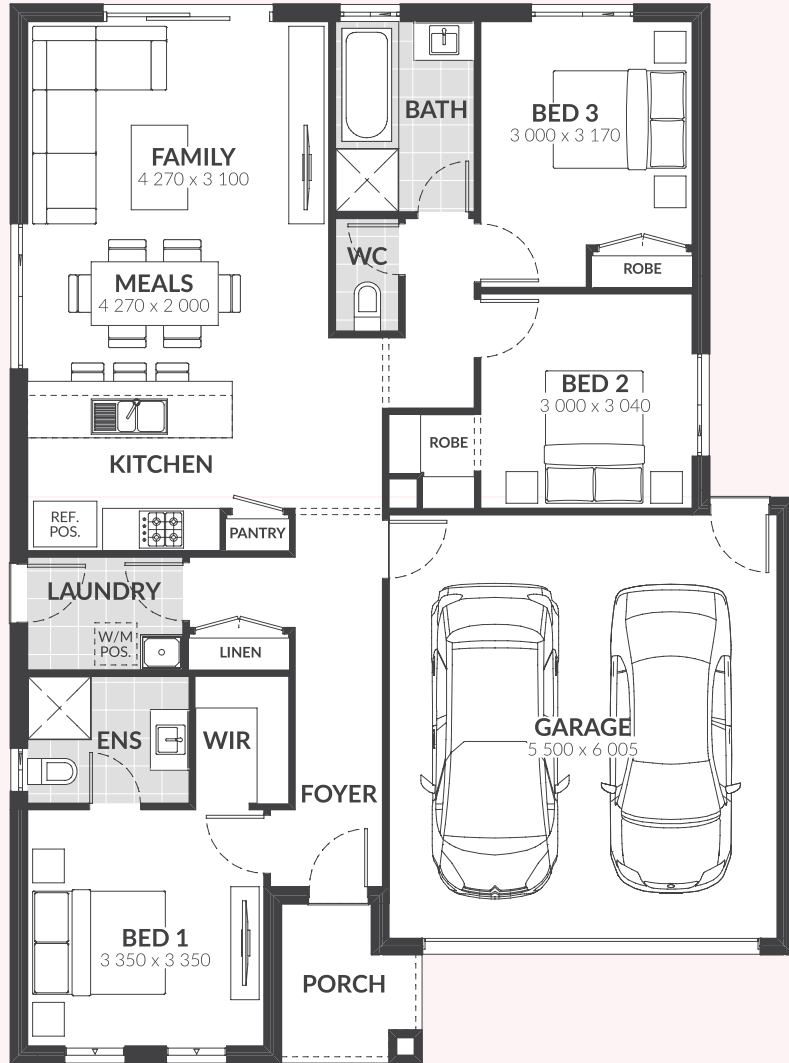


jgking.com.au
1300 JG KING

Up Collection 2019 homes are available in a range of sizes, which are indicative only. The required block frontage and width is subject to the fall and orientation of your land and developer and council guidelines. Floorplans in this brochure are based on the standard façade option. Whilst every endeavour has been made to ensure the accuracy of the information provided, all images are for illustration purposes only and may depict fixtures, finishes and features either not supplied or above standard design specification. These items may include decorative light fittings, wall finishes, furniture, window furnishings, fireplaces, cladding, in built joinery, facades and landscaping such as planter boxes, retaining walls, water features, fencing and barbecues. Geographical restrictions and travel surcharges may apply depending on building location. BAL 12.5 and 6 star energy rating based on standard plans only. For detailed home pricing and standard design inclusions regarding homes and your build location, please contact a JG King Homes representative. Information in this brochure is correct at the time of printing. This information is to be used as a guide only and JG King makes no warranties about the accuracy or completeness of the information. JG King Homes reserves the right to alter or withdraw floorplans and facades at any time without notice. Copyright ©2019 Reproduction in any form either in whole or part is forbidden. JG King Pty Ltd (T/A J G King Homes) ABN 21 006 627 210 Registered Building Practitioner Licence CDB-U 49366. V01 22.07.19

PARADISE 150

3 2 1 2

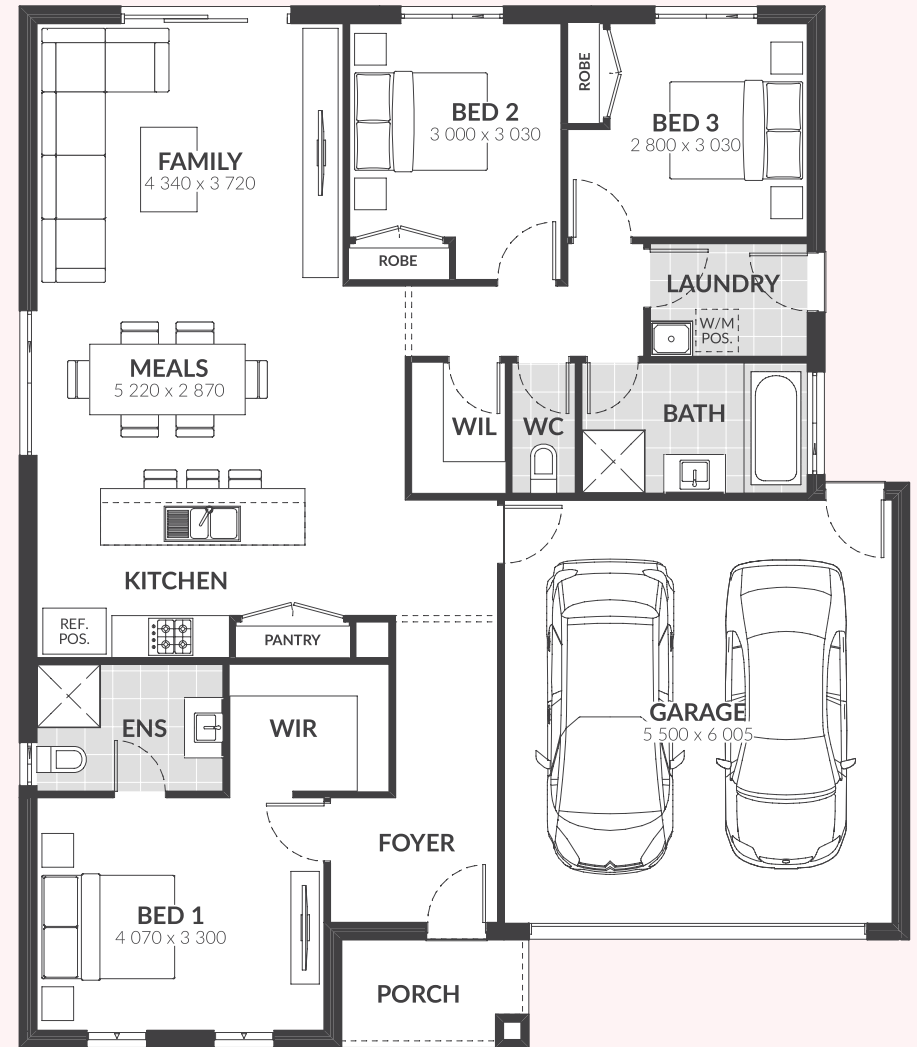


HOUSE	109.77m ²	11.82sq
PORCH	4.01m ²	0.43sq
GARAGE	36.22m ²	3.90sq
TOTAL AREA	150.00m ²	16.15sq

EXTERIOR WIDTH	11.10m
EXTERIOR LENGTH	15.00m
BLOCK WIDTH	12.50m
BLOCK DEPTH	25.00m

PARADISE 170

3 2 1 2



HOUSE	129.39m ²	13.93sq
PORCH	4.07m ²	0.44sq
GARAGE	36.05m ²	3.88sq
TOTAL AREA	169.51m ²	18.25sq

EXTERIOR WIDTH	12.60m
EXTERIOR LENGTH	14.75m
BLOCK WIDTH	14.00m
BLOCK DEPTH	25.00m







ROCKFORD

Its name sounds like a retreat, and in our books, it sure is. Rockford is where you get to have your own private space separate from the family areas. With bedrooms and amenities on one side of the home and family life and entertaining on the other, Rockford answers the needs of all modern-day young families. You also are offered the option to include a study nook and huge open plan family area - the possibilities are endless.



Victoria's largest builder of steel frame homes.

Superior to timber for its termite and fire resistance, steel frame technology is quickly becoming the number one choice for home builders in Australia. At JG King, we have a proven track record in building steel frame homes since 1985.

-  **TERMITE RESISTANT**
-  **BUSHFIRE PROTECTION**
-  **50 YEAR STRUCTURAL WARRANTY**
-  **MULTI AWARD WINNING BUILDER**
-  **OVER 20,000 HOMES BUILT**
-  **MELBOURNE & REGIONAL VICTORIA**

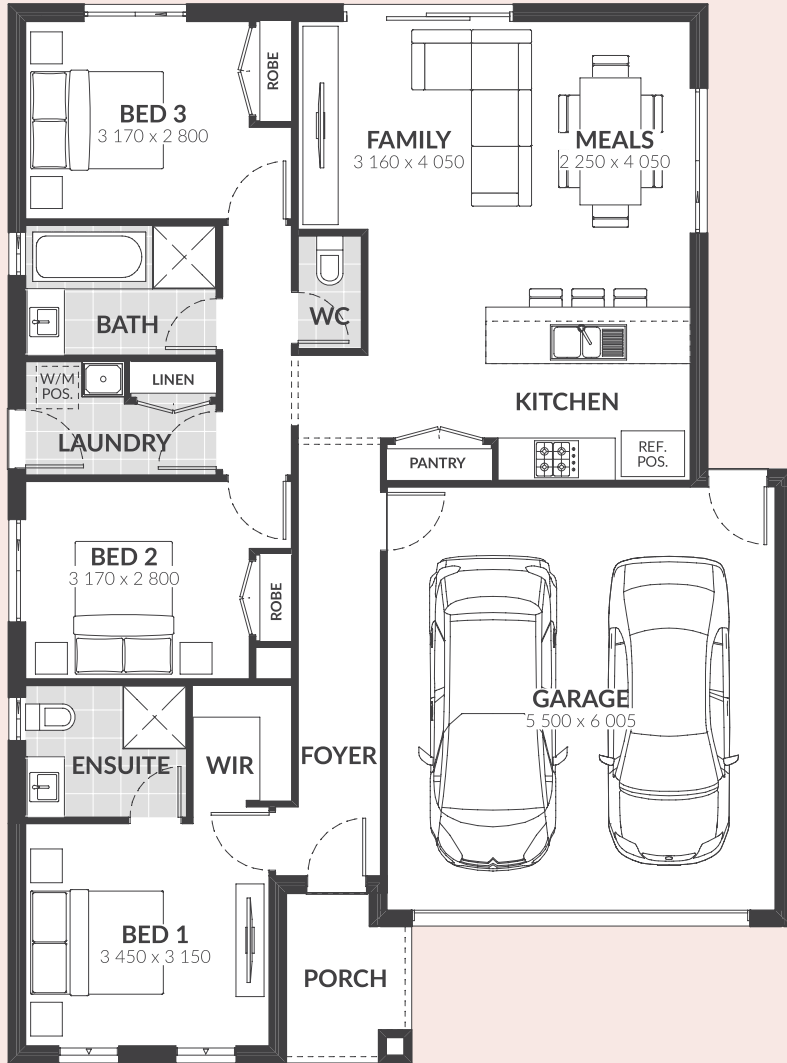


jgking.com.au
1300 JG KING

Up Collection 2019 homes are available in a range of sizes, which are indicative only. The required block frontage and width is subject to the fall and orientation of your land and developer and council guidelines. Floorplans in this brochure are based on the standard façade option. Whilst every endeavour has been made to ensure the accuracy of the information provided, all images are for illustration purposes only and may depict fixtures, finishes and features either not supplied or above standard design specification. These items may include decorative light fittings, wall finishes, furniture, window furnishings, fireplaces, cladding, in built joinery, facades and landscaping such as planter boxes, retaining walls, water features, fencing and barbecues. Geographical restrictions and travel surcharges may apply depending on building location. BAL 12.5 and 6 star energy rating based on standard plans only. For detailed home pricing and standard design inclusions regarding homes and your build location, please contact a JG King Homes representative. Information in this brochure is correct at the time of printing. This information is to be used as a guide only and JG King makes no warranties about the accuracy or completeness of the information. JG King Homes reserves the right to alter or withdraw floorplans and facades at any time without notice. Copyright ©2019 Reproduction in any form either in whole or part is forbidden. JG King Pty Ltd (T/A J G King Homes) ABN 21 006 627 210 Registered Building Practitioner Licence CDB-U 49366. V01 22.07.19

ROCKFORD 148

3 2 1 2

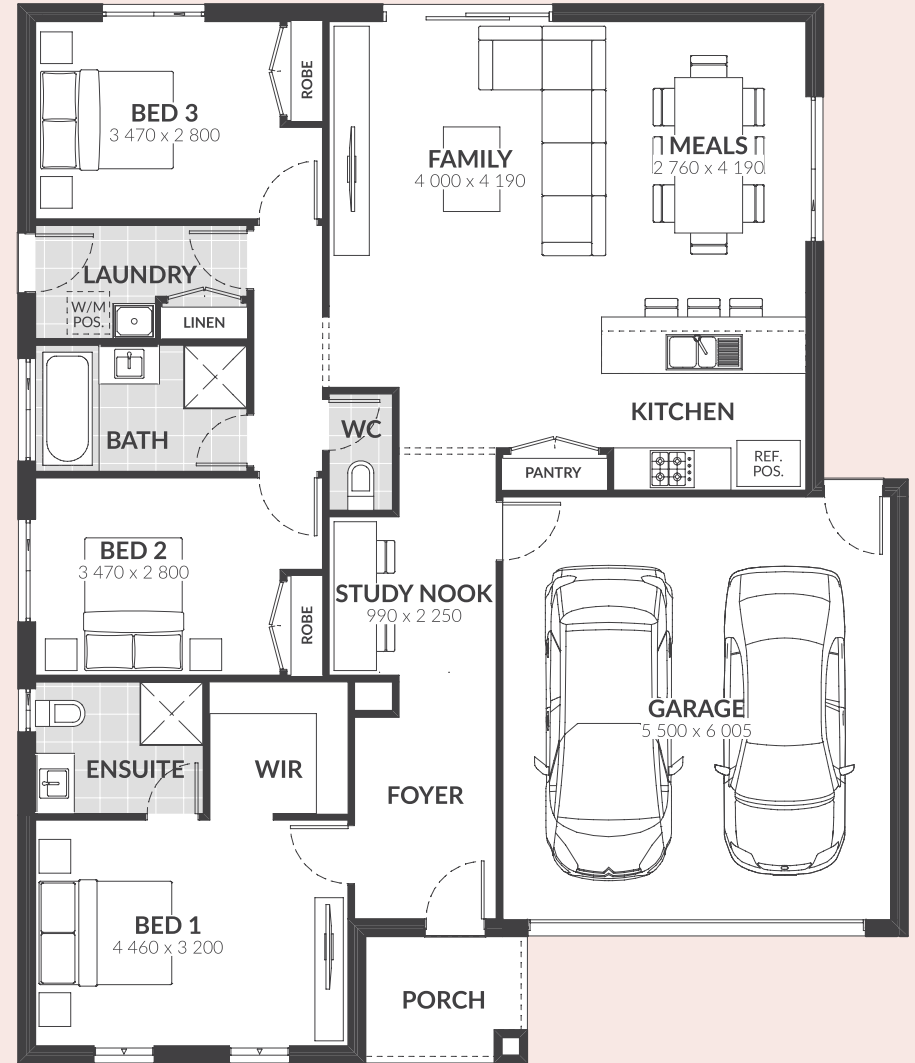


HOUSE	107.98m ²	11.62sq
PORCH	4.01m ²	0.43sq
GARAGE	36.13m ²	3.89sq
TOTAL AREA	148.12m ²	15.94sq

EXTERIOR WIDTH	11.10m
EXTERIOR LENGTH	15.00m
BLOCK WIDTH	12.50m
BLOCK DEPTH	25.00m

ROCKFORD 171

3 2 1 2



HOUSE	131.06m ²	14.11sq
PORCH	4.14m ²	0.45sq
GARAGE	36.02m ²	3.88sq
TOTAL AREA	171.22m ²	18.43sq

EXTERIOR WIDTH	12.60m
EXTERIOR LENGTH	15.00m
BLOCK WIDTH	14.00m
BLOCK DEPTH	25.00m







SKY

Don't let yourself be restricted by a narrow or small block of land! Our home design philosophy: reach for the skies! And in this case, for Sky. This home maximises the boundaries and exceeds anyone's expectations of what is possible in a smaller home. This unique home has been designed to comfortably fit three bedrooms, a single garage, a spacious kitchen, meals and family area. You can also choose between one- or two-bathroom options and keep living costs to a minimum in this cute, compact design.



Victoria's largest builder of steel frame homes.

Superior to timber for its termite and fire resistance, steel frame technology is quickly becoming the number one choice for home builders in Australia. At JG King, we have a proven track record in building steel frame homes since 1985.

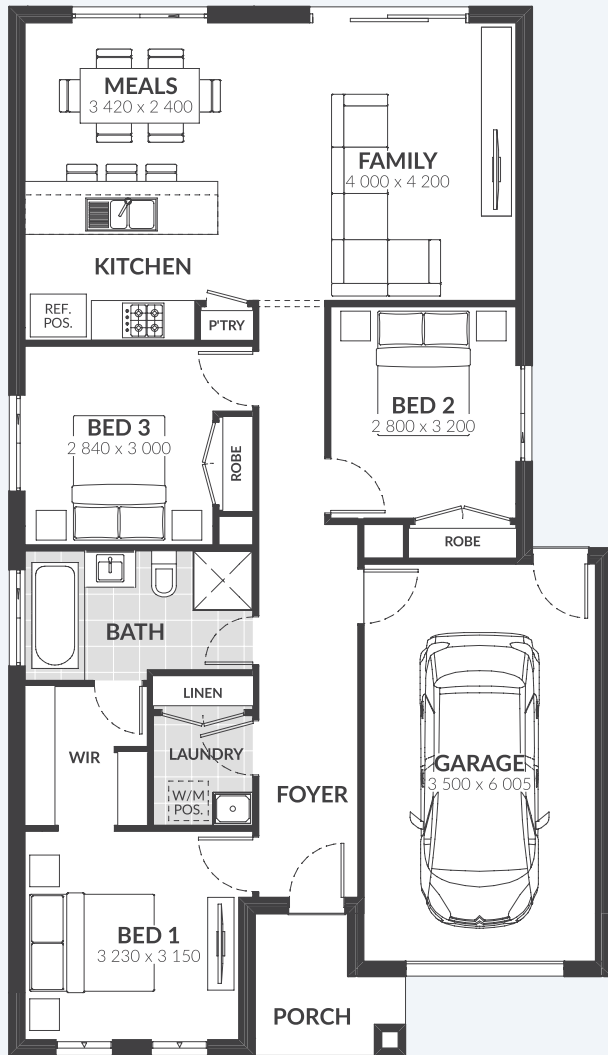
-  **TERMITE RESISTANT**
-  **BUSHFIRE PROTECTION**
-  **50 YEAR STRUCTURAL WARRANTY**
-  **MULTI AWARD WINNING BUILDER**
-  **OVER 20,000 HOMES BUILT**
-  **MELBOURNE & REGIONAL VICTORIA**



jgking.com.au
1300 JG KING

Up Collection 2019 homes are available in a range of sizes, which are indicative only. The required block frontage and width is subject to the fall and orientation of your land and developer and council guidelines. Floorplans in this brochure are based on the standard façade option. Whilst every endeavour has been made to ensure the accuracy of the information provided, all images are for illustration purposes only and may depict fixtures, finishes and features either not supplied or above standard design specification. These items may include decorative light fittings, wall finishes, furniture, window furnishings, fireplaces, cladding, in built joinery, facades and landscaping such as planter boxes, retaining walls, water features, fencing and barbecues. Geographical restrictions and travel surcharges may apply depending on building location. BAL 12.5 and 6 star energy rating based on standard plans only. For detailed home pricing and standard design inclusions regarding homes and your build location, please contact a JG King Homes representative. Information in this brochure is correct at the time of printing. This information is to be used as a guide only and JG King makes no warranties about the accuracy or completeness of the information. JG King Homes reserves the right to alter or withdraw floorplans and facades at any time without notice. Copyright ©2019 Reproduction in any form either in whole or part is forbidden. JG King Pty Ltd (T/A J G King Homes) ABN 21 006 627 210 Registered Building Practitioner Licence CDB-U 49366. V01 22.07.19

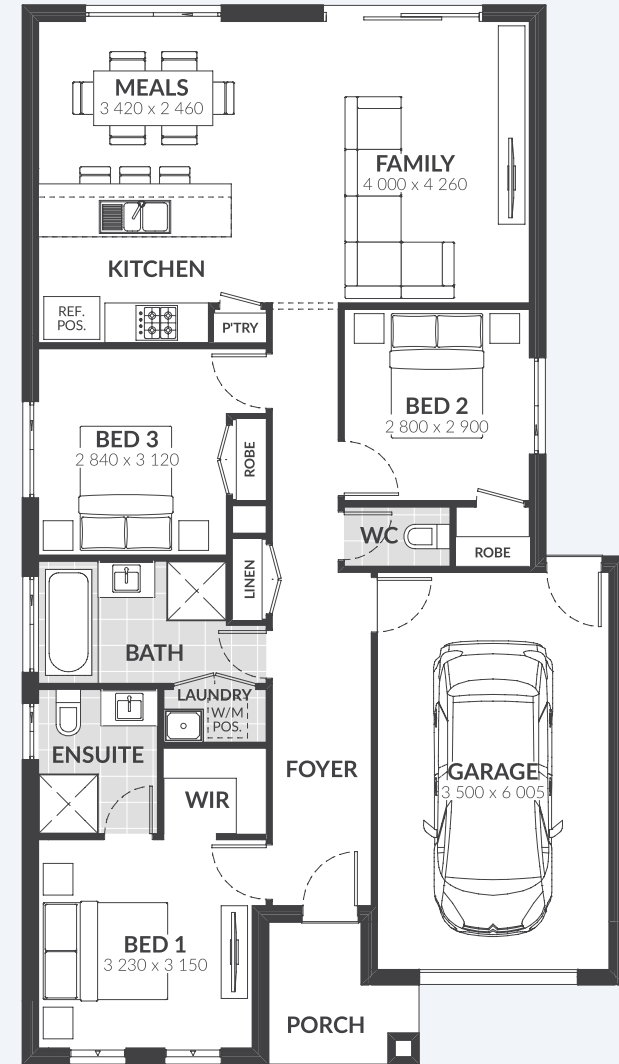
SKY 131



HOUSE	102.80m ²	11.07sq
PORCH	4.08m ²	0.44sq
GARAGE	23.82m ²	2.56sq
TOTAL AREA	130.70m ²	14.07sq

EXTERIOR WIDTH	9.10m
EXTERIOR LENGTH	15.85m
BLOCK WIDTH	10.50m
BLOCK DEPTH	25.00m

SKY 132



HOUSE	103.98m ²	11.19sq
PORCH	4.08m ²	0.44sq
GARAGE	23.82m ²	2.56sq
TOTAL AREA	131.88m ²	14.20sq

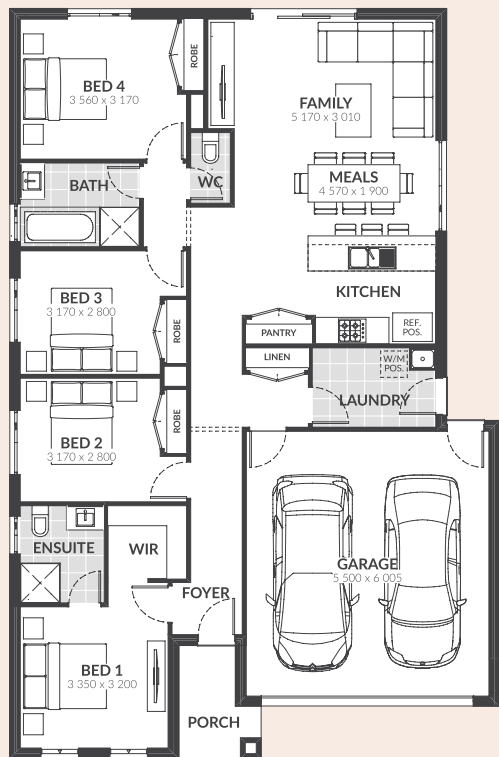
EXTERIOR WIDTH	9.10m
EXTERIOR LENGTH	16.00m
BLOCK WIDTH	10.50m
BLOCK DEPTH	25.00m

SPICE

Sugar and spice and everything nice. If you like the sound of that, you'll love our Spice. Four bedrooms, a huge open plan kitchen, meals and family area with plenty of natural light - a layout that's straight out of an entertainer's dream. What's more, this spicy ensemble also features handy storage throughout as well as the option of a second and even a third living. The master suite is situated at the front of the home and comes complete with a walk-in robe and ensuite.



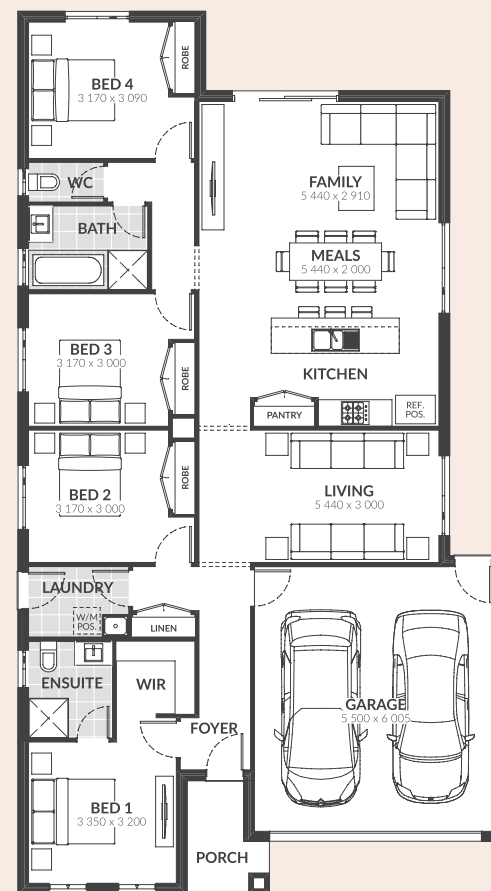
SPICE 171



HOUSE	130.68m ²	14.07sq
PORCH	4.01m ²	0.43sq
GARAGE	36.38m ²	3.92sq
TOTAL AREA	171.07m ²	18.41sq

EXTERIOR WIDTH	11.10m
EXTERIOR LENGTH	17.00m
BLOCK WIDTH	12.50m
BLOCK DEPTH	25.00m

SPICE 189

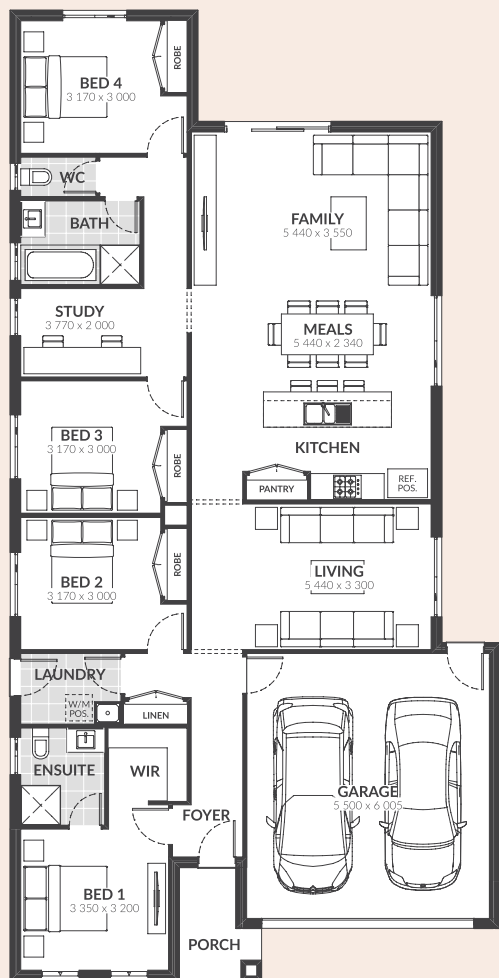


HOUSE	148.92m ²	16.03sq
PORCH	4.01m ²	0.43sq
GARAGE	36.41m ²	3.92sq
TOTAL AREA	189.34m ²	20.38sq

EXTERIOR WIDTH	11.10m
EXTERIOR LENGTH	20.00m
BLOCK WIDTH	12.50m
BLOCK DEPTH	28.00m

SPICE 205

4 2 2 1 2

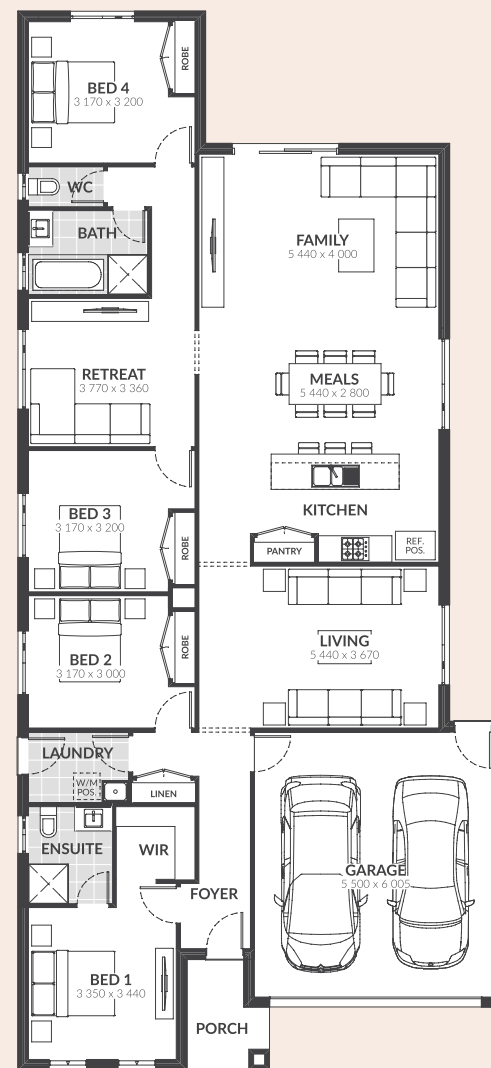


HOUSE	164.50m ²	17.71sq
PORCH	4.01m ²	0.43sq
GARAGE	36.41m ²	3.92sq
TOTAL AREA	204.92m ²	22.06sq

EXTERIOR WIDTH	11.10m
EXTERIOR LENGTH	22.00m
BLOCK WIDTH	12.50m
BLOCK DEPTH	30.00m

SPICE 221

4 2 3 2



HOUSE	180.43m ²	19.42sq
PORCH	4.07m ²	0.44sq
GARAGE	36.34m ²	3.91sq
TOTAL AREA	220.84m ²	23.77sq

EXTERIOR WIDTH	11.10m
EXTERIOR LENGTH	24.00m
BLOCK WIDTH	12.50m
BLOCK DEPTH	32.00m

UP
COLLECTION

STREETSCAPE

DOUBLE STOREY



UP

COLLECTION

Every double storey home in the Up Collection is built with a Truecore® steel frame ensuring strength and protection against fire and termites for decades to come. It is because of our commitment to providing you the safest, strongest home possible that our homes are also built with a genuine Colorbond® steel roof. Together, these contribute to the BAL 12.5 rating you are assured with your double storey Up Collection home which is backed by a 50 year structural warranty.





GRANADA



PANAMA



REGENCY



TRAFALGAR







COMMANDER

Take charge of your home life with Commander - the double storey home that keeps on giving to families of all sizes. This floorplan consists of four bedrooms plus a study, upstairs and downstairs living spaces and clever storage solutions in the form of wardrobes, linen closets and even an under-stair storage area. There's enough room for the whole family to enjoy their time together or privately, made better with a huge open plan family, meals and kitchen space that opens to the great outdoors.



Victoria's largest builder of steel frame homes.

Superior to timber for its termite and fire resistance, steel frame technology is quickly becoming the number one choice for home builders in Australia. At JG King, we have a proven track record in building steel frame homes since 1985.

-  **TERMITE RESISTANT**
-  **BUSHFIRE PROTECTION**
-  **50 YEAR STRUCTURAL WARRANTY**
-  **MULTI AWARD WINNING BUILDER**
-  **OVER 20,000 HOMES BUILT**
-  **MELBOURNE & REGIONAL VICTORIA**

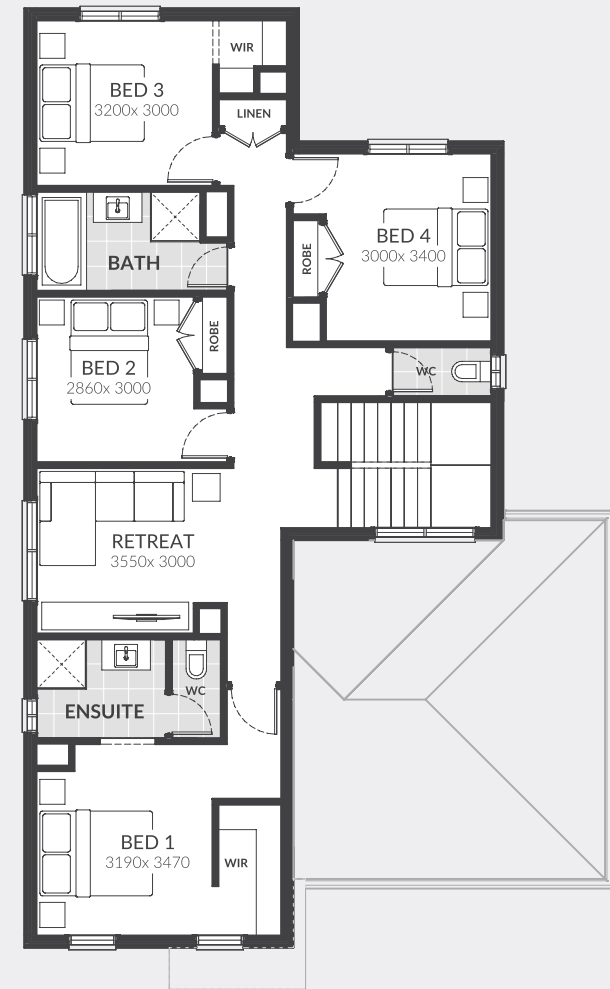
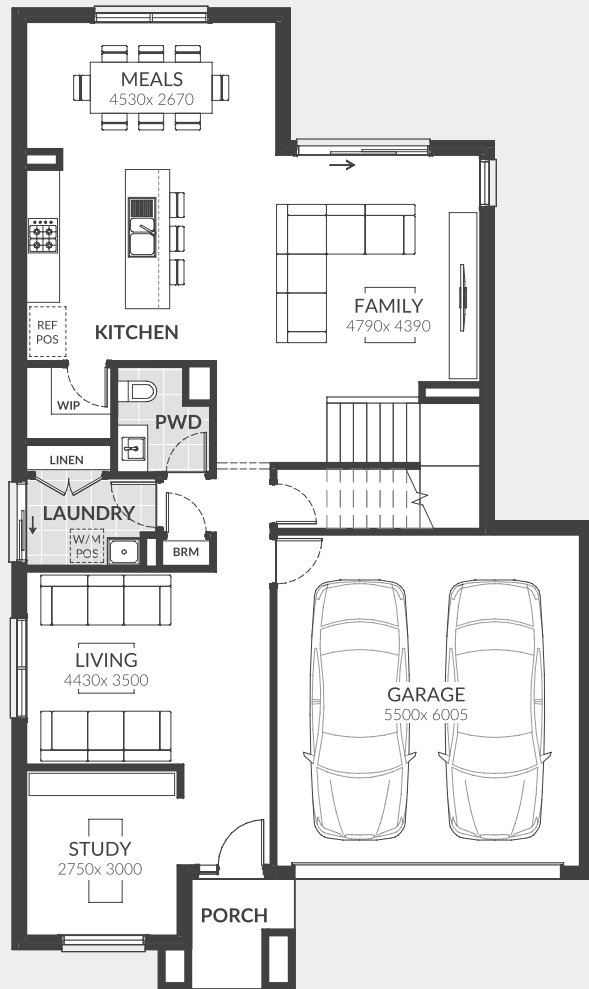


jgking.com.au
1300 JG KING

Up Collection 2019 homes are available in a range of sizes, which are indicative only. The required block frontage and width is subject to the fall and orientation of your land and developer and council guidelines. Floorplans in this brochure are based on the standard façade option. Whilst every endeavour has been made to ensure the accuracy of the information provided, all images are for illustration purposes only and may depict fixtures, finishes and features either not supplied or above standard design specification. These items may include decorative light fittings, wall finishes, furniture, window furnishings, fireplaces, cladding, in built joinery, facades and landscaping such as planter boxes, retaining walls, water features, fencing and barbecues. Geographical restrictions and travel surcharges may apply depending on building location. BAL 12.5 and 6 star energy rating based on standard plans only. For detailed home pricing and standard design inclusions regarding homes and your build location, please contact a JG King Homes representative. Information in this brochure is correct at the time of printing. This information is to be used as a guide only and JG King makes no warranties about the accuracy or completeness of the information. JG King Homes reserves the right to alter or withdraw floorplans and facades at any time without notice. Copyright ©2019 Reproduction in any form either in whole or part is forbidden. JG King Pty Ltd (T/A J G King Homes) ABN 21 006 627 210 Registered Building Practitioner Licence CDB-U 49366. V01 06.12.19

GROUND FLOOR

FIRST FLOOR

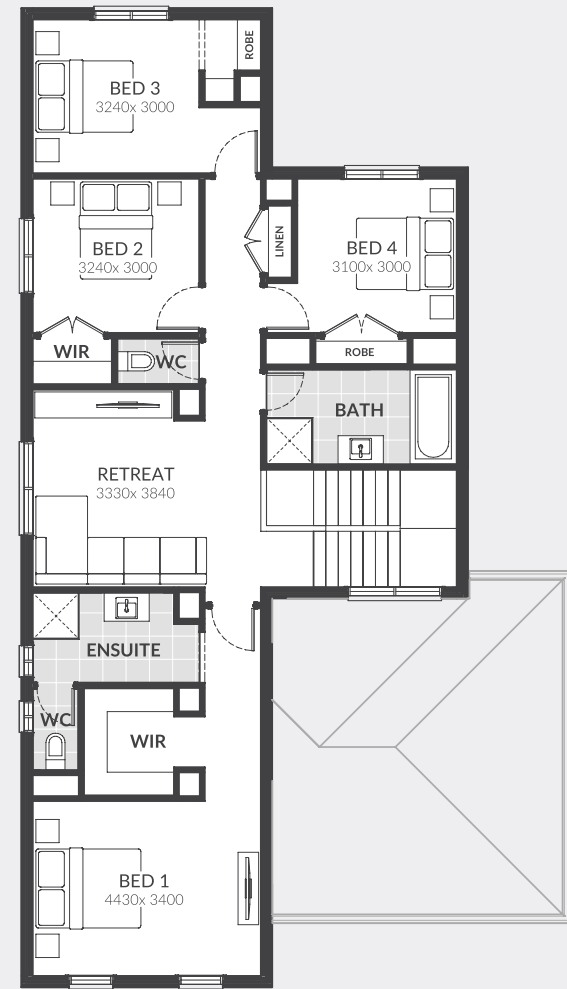
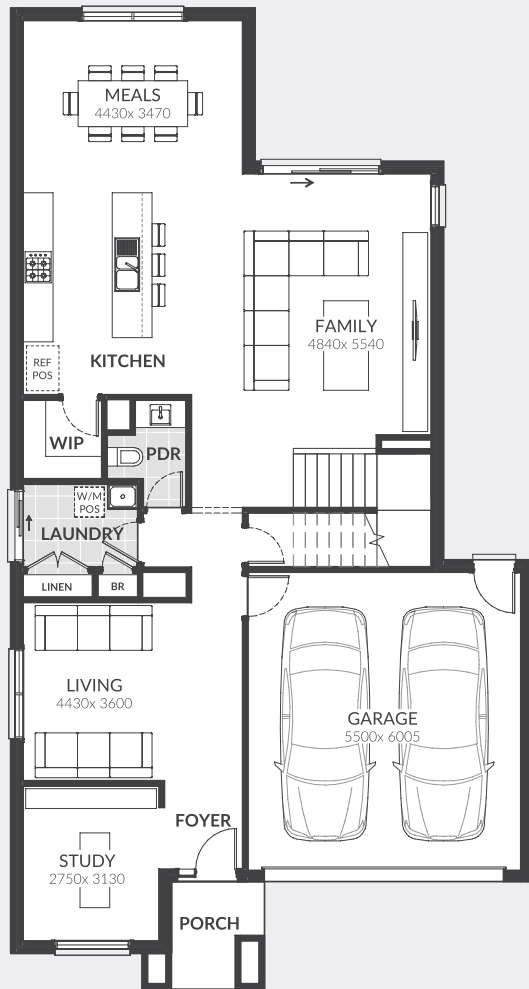


HOUSE	215.99m ²	23.35sq
PORCH	4.15m ²	0.45sq
GARAGE	36.19m ²	3.90sq
TOTAL AREA	256.33m ²	27.59sq

EXTERIOR WIDTH	10.50m
EXTERIOR LENGTH	17.72m
BLOCK WIDTH	12.50m
BLOCK DEPTH	25.00m

GROUND FLOOR

FIRST FLOOR

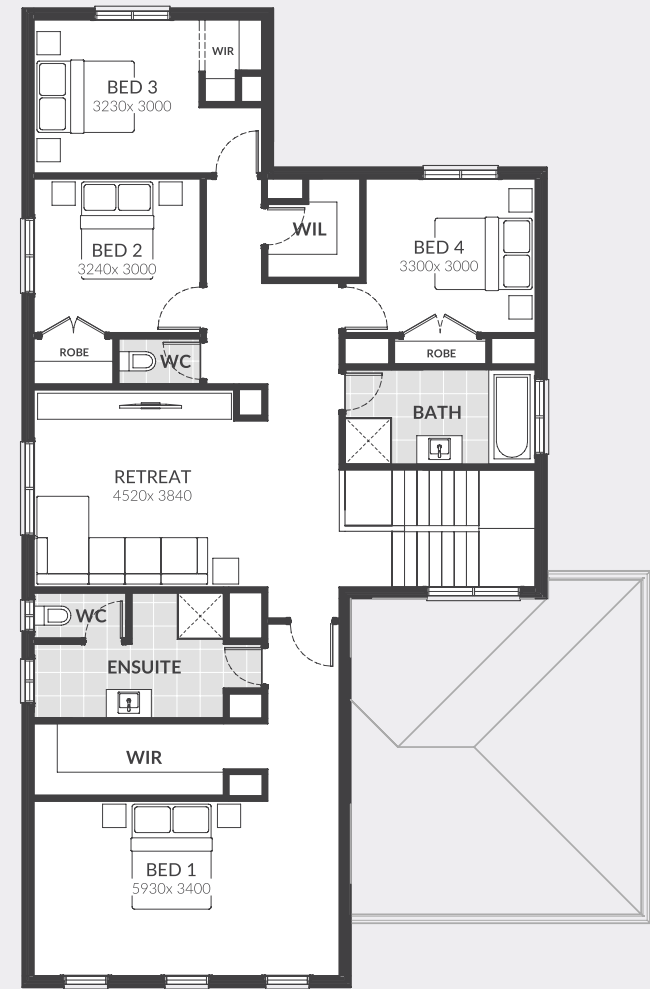


HOUSE	243.45m ²	26.21sq
PORCH	4.46m ²	0.48sq
GARAGE	36.19m ²	3.90sq
TOTAL AREA	284.10m ²	30.58sq

EXTERIOR WIDTH	10.50m
EXTERIOR LENGTH	19.72m
BLOCK WIDTH	12.50m
BLOCK DEPTH	28.00m

GROUND FLOOR

FIRST FLOOR

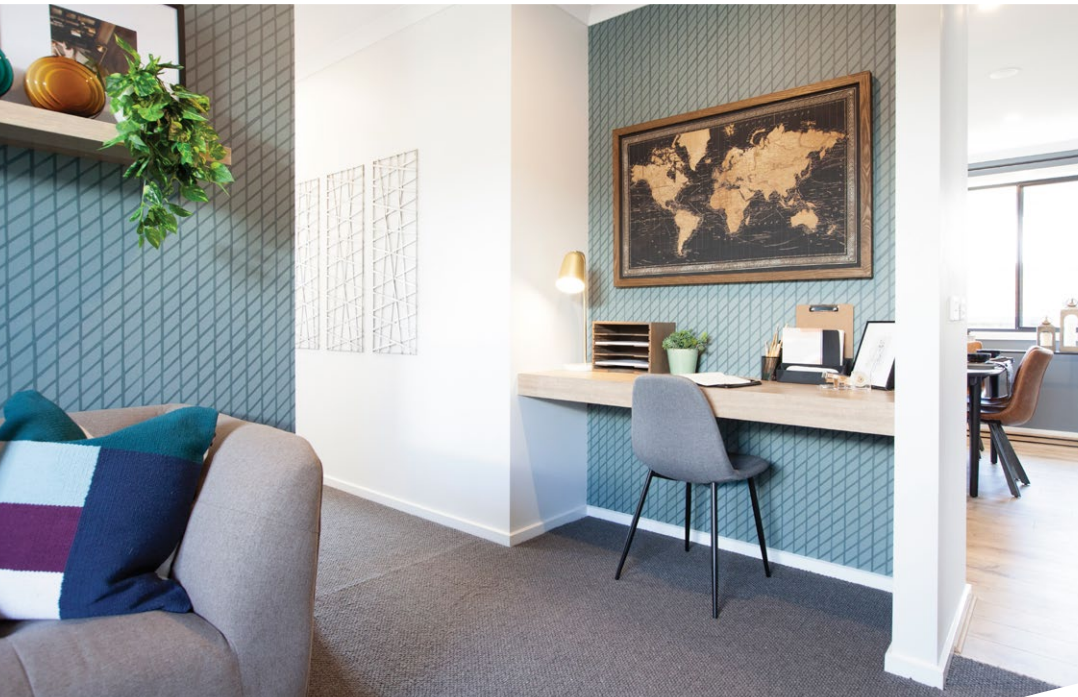


HOUSE	284.81m ²	30.66sq
PORCH	4.85m ²	0.52sq
GARAGE	36.19m ²	3.90sq
TOTAL AREA	325.85m ²	35.07sq

EXTERIOR WIDTH	12.00m
EXTERIOR LENGTH	19.72m
BLOCK WIDTH	14.00m
BLOCK DEPTH	28.00m







EMPEROR

Emperor speaks volumes about the royal treatment you get with this design. The clever use of space is translated into a spacious, walk-in robe concealed behind the bed in the master suite. The master also comes with a large ensuite and separate WC for extra privacy and comfort for couples to have privacy away from the rest of the household. To complete this breathtaking home are three additional bedrooms, study, private retreat, two living areas, a large open plan kitchen and a family and meals space.



Victoria's largest builder of steel frame homes.

Superior to timber for its termite and fire resistance, steel frame technology is quickly becoming the number one choice for home builders in Australia. At JG King, we have a proven track record in building steel frame homes since 1985.

-  **TERMITE RESISTANT**
-  **BUSHFIRE PROTECTION**
-  **50 YEAR STRUCTURAL WARRANTY**
-  **MULTI AWARD WINNING BUILDER**
-  **OVER 20,000 HOMES BUILT**
-  **MELBOURNE & REGIONAL VICTORIA**

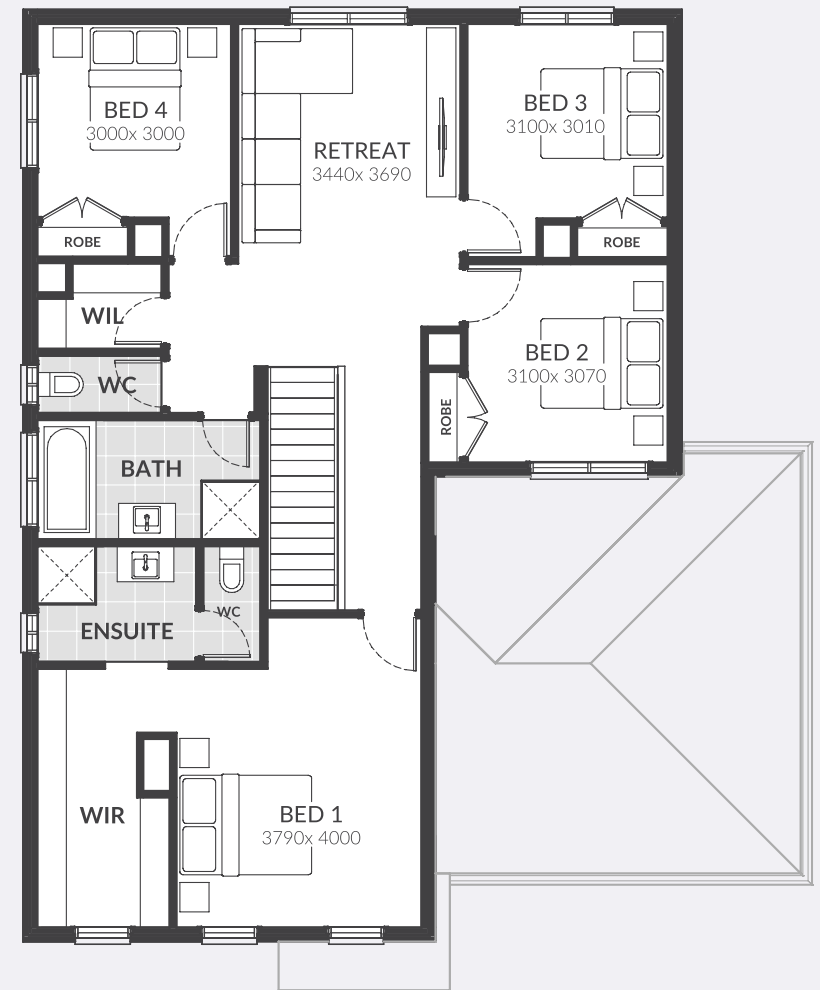
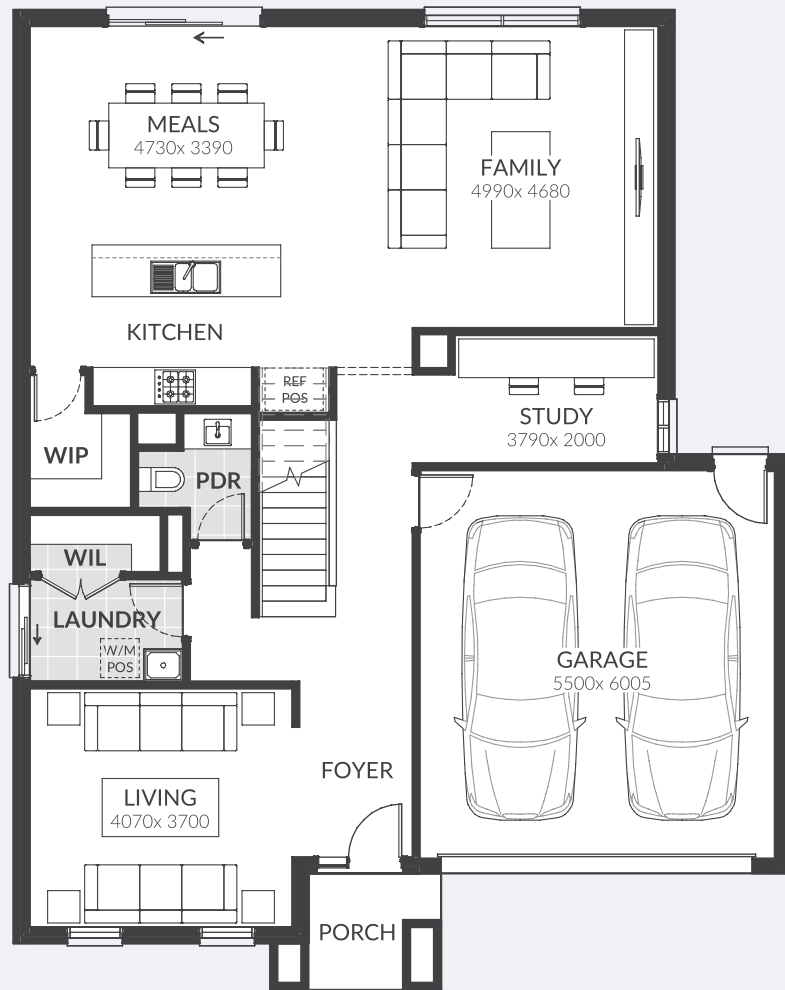


jgking.com.au
1300 JG KING

Up Collection 2019 homes are available in a range of sizes, which are indicative only. The required block frontage and width is subject to the fall and orientation of your land and developer and council guidelines. Floorplans in this brochure are based on the standard façade option. Whilst every endeavour has been made to ensure the accuracy of the information provided, all images are for illustration purposes only and may depict fixtures, finishes and features either not supplied or above standard design specification. These items may include decorative light fittings, wall finishes, furniture, window furnishings, fireplaces, cladding, in built joinery, facades and landscaping such as planter boxes, retaining walls, water features, fencing and barbecues. Geographical restrictions and travel surcharges may apply depending on building location. BAL 12.5 and 6 star energy rating based on standard plans only. For detailed home pricing and standard design inclusions regarding homes and your build location, please contact a JG King Homes representative. Information in this brochure is correct at the time of printing. This information is to be used as a guide only and JG King makes no warranties about the accuracy or completeness of the information. JG King Homes reserves the right to alter or withdraw floorplans and facades at any time without notice. Copyright ©2019 Reproduction in any form either in whole or part is forbidden. JG King Pty Ltd (T/A J G King Homes) ABN 21 006 627 210 Registered Building Practitioner Licence CDB-U 49366. V01 06.12.19

GROUND FLOOR

FIRST FLOOR



HOUSE	234.46m ²	25.24sq
PORCH	4.11m ²	0.44sq
GARAGE	36.19m ²	3.90sq
TOTAL AREA	274.76m ²	29.58sq

EXTERIOR WIDTH	12.00m
EXTERIOR LENGTH	14.41m
BLOCK WIDTH	14.00m
BLOCK DEPTH	25.00m



Our standard inclusions showcase style and functionality, with industry-leading features such as 100% Australian Truecore® steel frames and a 50 year structural warranty included as standard with every home.



jgking.com.au | 1300 JG KING



Victoria's largest builder of steel frame homes.

Superior to timber for its termite and fire resistance, steel frame technology is quickly becoming the number one choice for home builders in Australia. At JG King, we have a proven track record in building steel frame homes since 1985.



TERMITE RESISTANT



BUSHFIRE PROTECTION



50 YEAR STRUCTURAL WARRANTY



MULTI AWARD WINNING BUILDER



OVER 20,000 HOMES BUILT



MELBOURNE & REGIONAL VICTORIA

Up Collection 2019 homes are available in a range of sizes, which are indicative only. The required block frontage and width is subject to the fall and orientation of your land and developer and council guidelines. Floorplans in this brochure are based on the standard façade option. Whilst every endeavour has been made to ensure the accuracy of the information provided, all images are for illustration purposes only and may depict fixtures, finishes and features either not supplied or above standard design specification. These items may include decorative light fittings, wall finishes, furniture, window furnishings, fireplaces, cladding, in built joinery, facades and landscaping such as planter boxes, retaining walls, water features, fencing and barbecues. Geographical restrictions and travel surcharges may apply depending on building location. BAL 12.5 and 6 star energy rating based on standard plans only. For detailed home pricing and standard design inclusions regarding homes and your build location, please contact a JG King Homes representative. Information in this brochure is correct at the time of printing. This information is to be used as a guide only and JG King makes no warranties about the accuracy or completeness of the information. JG King Homes reserves the right to alter or withdraw floorplans and facades at any time without notice. Copyright ©2019 Reproduction in any form either in whole or part is forbidden. JG King Pty Ltd (T/A J G King Homes) ABN 21 006 627 210 Registered Building Practitioner Licence CDB-U 49366. V01 10.12.19